



March 26, 2015

ANNOUNCEMENT

PRODUCT UPDATE: The GPT Tuk-A-Way® Now With Steel Shipping Rack

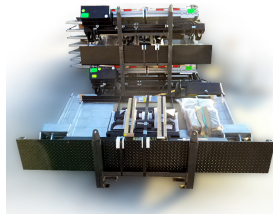
Maxon continues to integrate the latest technological features in the already popular GPT.

Ideal for almost every application, the level ride design of the GPT keeps the cargo stable and the lightweight aluminum platform will look great for years to come. This versatility and reliability is why the GPT is the #1 selling liftgate series in North America.



NEW FEATURES

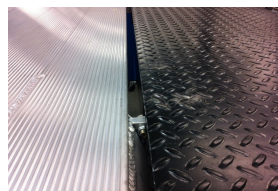
As of January 2015, Maxon GPTs are now being shipped in a steel shipping rack. The racks reduce the likelihood of shipping damage to the gates and allow for easy handling during loading and unloading.



OTHER FEATURE HIGHLIGHTS

SmartSpace™

Maxon has a long history of innovations that make liftgates more efficient and easier to use. Hydraulic lock valves, level ride, and even technologies such as Smart Stow® are just a few of these. Now, we're adding an additional feature on selected liftgates—a gap, or SmartSpace™, between the liftgate and the extension plate.



New Platform Opener, Fixed ICC Bumper And License Plate Holder

Our goal is always to make our gates as easy and efficient to operate as possible. A new opener arm design facilitates this intent and helps to minimize platform opening forces throughout the applicable bed height range. A new fixed ICC bumper and license plate holder, which takes the guesswork away for



CALENDAR OF EVENTS

National Private Truck Council (NPTC)

April 26 – 28, 2015
Cincinnati, OH
Booth #424

Idealease Best Practices

June 8 - 10, 2015
Columbus, OH

Hawaiian Transportation Association (HTA)

August 28, 2015
Big Island, HI

National Trailer Dealer Association (NTDA)

Annual Convention
September 23-25, 2015
Hollywood, FL

The Distribution Solutions Conference (IFDA)

October 26 - 28, 2015
Phoenix, AZ

ExpoTransporte ANPACT

Nov 18-20, 2015
Guadalajara, Mexico

our installers as to where to mount the vehicle's license plate, compliments the standard design upgrades of the 2014 version.

24" Block Bumper

The 24" Block Bumper is now a standard on all GPTs.



OPTION HIGHLIGHTS

Options for Slip-Resistant Platforms: MAX GRIP® Or Anti-Slip Coating

Maxon now offers MAX GRIP® – a proprietary knurling process that makes the platform surface even more slip resistant by mechanically indenting the surface profile.

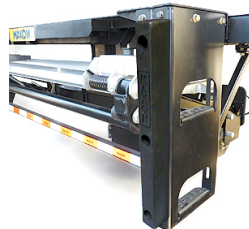


The second option is to order your GPT with anti-slip coating. Both of these options required a special order before but are now available through the regular ordering process.

Bolt-On Extension Plate (As Before) And Even More Step Options

Simply said, the bolt-on extension plate and steps is superior to the previous weld-on method for two main reasons: it overcomes corrosion issues induced by welding & repainting and it simplifies installation.

Clearly designed for superior strength, the new generation GPT is now available with the following step options:



- Standard Dual Steps (painted or galvanized)
- Flex Steps (painted or galvanized)

Optional Galvanized Finish

The GPT comes standard with a MaxPro® paint finish. For a nominal fee, the new generation GPT will be available with the optional Galvanized finish. Galvanizing provides the ultimate in long-term corrosion resistance.



For more information on our current GPT model, please visit our website at www.maxonlift.com/products/tuk-a-way/gpt.

Maxon Lift Corp.-Marketing Department
11921 Slauson Avenue, Santa Fe Springs, CA 90670-2221
(800)227-4116 | (562)464-0099

www.maxonlift.com

[Unsubscribe or update your email preferences by selecting this link.](#)



11921 Slauson Avenue | Santa Fe Springs, CA 90670-2221